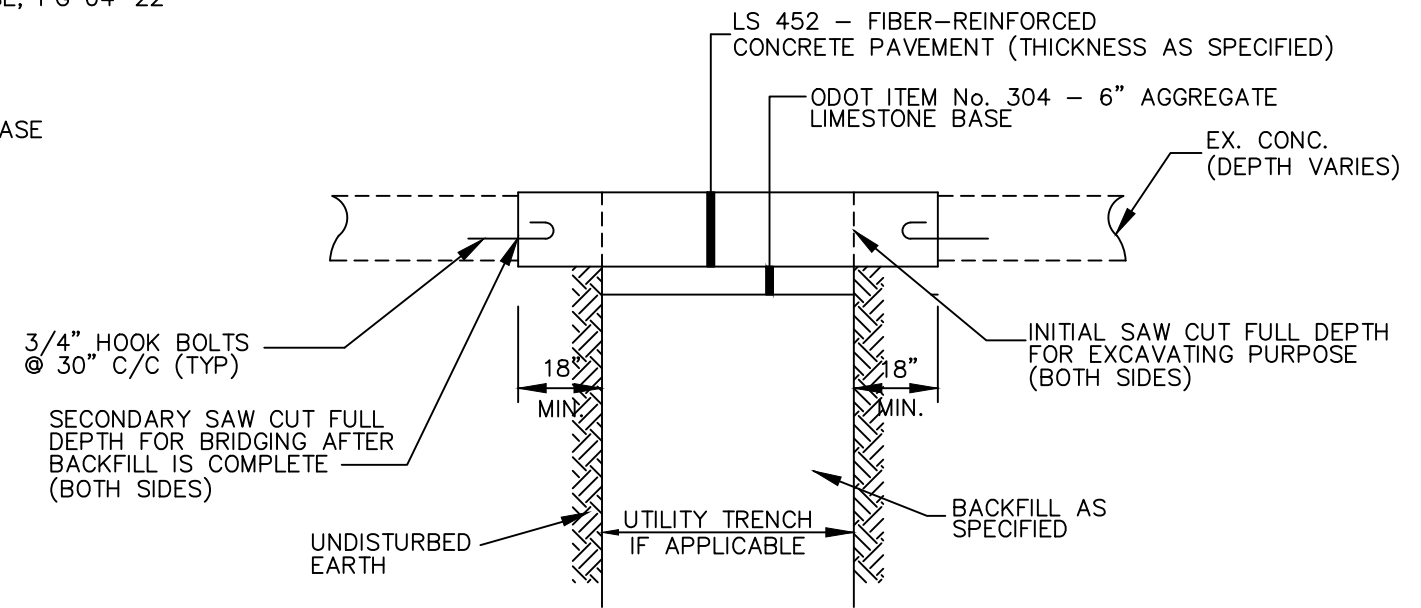
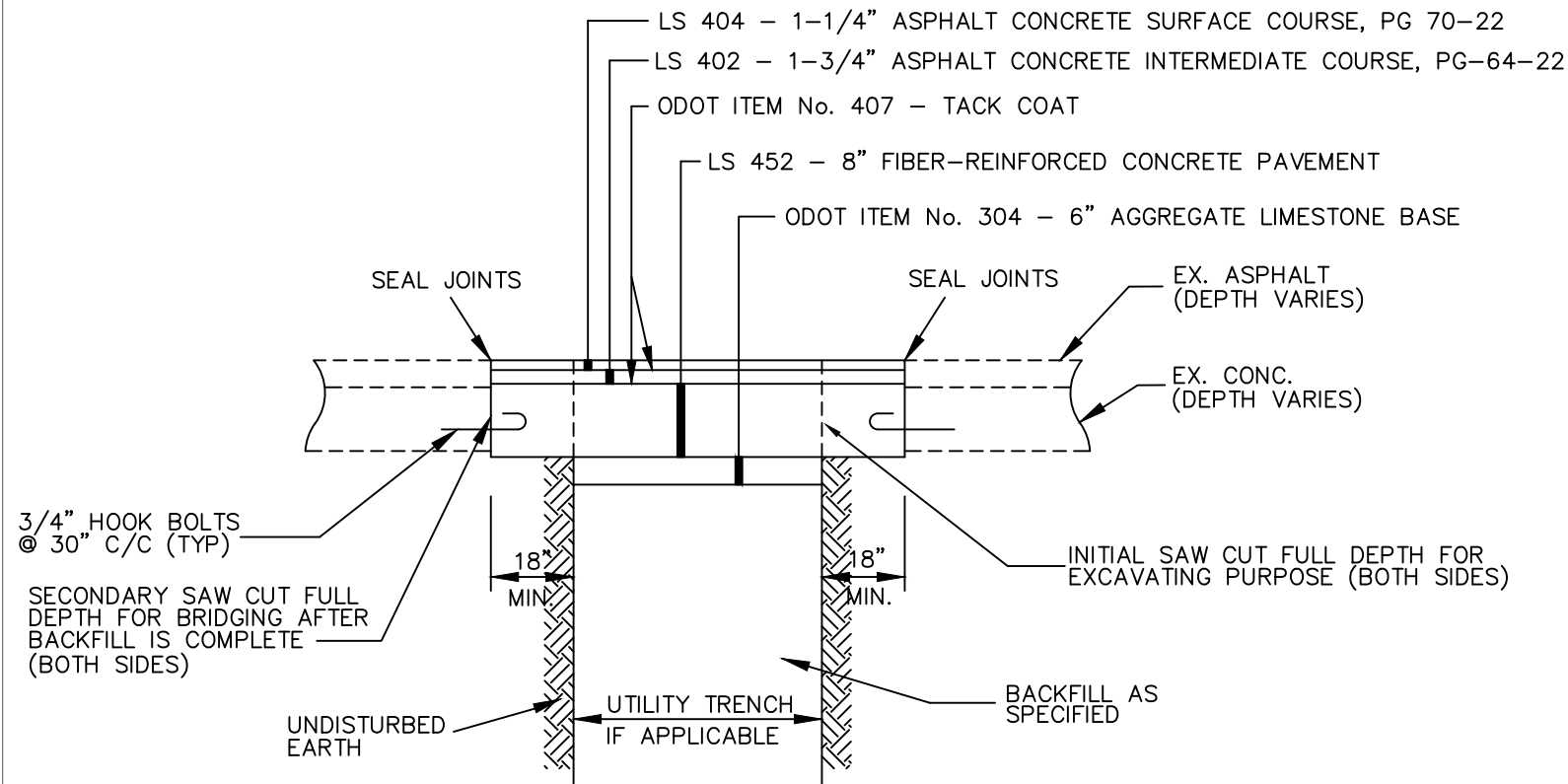


ASPHALT PAVEMENT



CONCRETE PAVEMENT



ASPHALT OVER
CONCRETE BASE PAVEMENT

NOTES:

1. CONTRACTOR SHALL SAW CUT ALL EDGES AND REMOVE ALL EXISTING PAVEMENT MATERIALS, INCLUDING DOWELS AND REINFORCING MAT, TO THE LIMITS INDICATED ON THE PLAN OR AS DIRECTED BY THE ENGINEER, AND AT ALL TIMES A MINIMUM OF 6-INCHES BEYOND THE LIMITS OF THE DETERIORATED PAVEMENT.
2. DEPTH OF EXCAVATION SHALL EXTEND A MINIMUM OF 6-INCHES BELOW THE EXISTING PAVEMENT MATERIALS (ASPHALT, CONCRETE OR BRICK) TO ALLOW FOR THE INSTALLATION OF 6-INCHES OF ITEM 304.
3. SURFACES OF THE REPAIR AREA SHALL BE CLEANED TO THE SATISFACTION OF THE ENGINEER.
4. ALL SURFACES THAT WILL BE IN CONTACT WITH ASPHALT CONCRETE SHALL BE FIRST COATED WITH TACK COAT AS PER ITEM LS 401.
5. INSTALL ITEM 301 (6-INCHES MIN.) AND ITEM LS 402 OR ITEM LS 404 AS REQUIRED TO MATCH THE PLANED SURFACE.
6. SECONDARY SAW CUT REQUIRED ONLY FOR UTILITY TRENCH REPAIRS.



REVISIONS:	02-11-2011
	07-31-2014
	04-13-2015

SCALE:	N.T.S.
--------	--------

STANDARD DRAWING:	PAVEMENT REPAIR DETAILS
-------------------	-------------------------

NUMBER:	P-1
---------	-----